

# **ANNUAL HIV SURVEILLANCE SUMMARY REPORT**

**COMMONWEALTH OF PENNSYLVANIA**

**December 2013**



## Contact Information & Contributors

The Annual HIV Surveillance Summary is prepared by the  
Bureau of Epidemiology  
Pennsylvania Department of Health

Bureau of Epidemiology  
Division of Infectious Disease Epidemiology  
HIV Surveillance & Epidemiology Section

Irshad A. Shaikh, MD, MPH, PhD, Director, Bureau of Epidemiology  
Atmaram Nambiar, MD, MPH, Director, Division of Infectious Disease Epidemiology  
Godwin Obiri, DrPH, MS, Director, HIV Surveillance & Epidemiology  
Martin Ngokion, MD, MPH, Epidemiologist  
Michelle Clarke, BS, Epidemiology Program Specialist  
Michael Allen, MPH, Epidemiology Research Associate  
Bonnie Krampe, MPH, Epidemiology Research Associate  
Ikechukwu Onukogu, MS, Epidemiology Program Specialist

The HIV Surveillance & Epidemiology Section gratefully acknowledges the support of community health districts, county/municipal health departments, physicians, hospitals and laboratories reporting HIV cases in Pennsylvania. This project is funded by a grant award from the Centers for Disease Control and Prevention.

Requests for reprints, updates and inquiries may be sent to:

ATTN: 'Annual HIV Summary Report' Requests  
HIV Surveillance & Epidemiology Section  
Division of Infectious Disease Epidemiology  
Bureau of Epidemiology  
Pennsylvania Department of Health  
Health & welfare Building, Room 933  
625 Forster Street  
Harrisburg, PA 17120

The data provided in the tables, figures and maps are based on HIV reports received through March 31, 2013. Expanded analysis of data presented in the Annual HIV Surveillance Summary and other HIV data may be requested by sending e-mail to [c-hivepi@state.pa.us](mailto:c-hivepi@state.pa.us) or by telephone/fax to our office at 717-783-0481 (tel) or 717-772-6975 (fax).

The Pennsylvania Department of Health is an equal opportunity provider of grants, contracts, services and employment

Suggested Citation of Data Source: Annual HIV Surveillance Summary  
Bureaus of Epidemiology, PA Dept. of Health  
Publication Number: HD0234P

## **A Special Note for the Readers of Pennsylvania HIV Surveillance Report Explanation for Changes in the Annual HIV Surveillance Summary Report**

This note is intended to inform all readers of changes we have introduced in the Pennsylvania Annual Human Immunodeficiency Virus (HIV) Surveillance Summary Report. The format of this annual summary has changed from the format used in previous years to reflect some changes in the way HIV is viewed. This report considers HIV infection as a single disease entity with varying degrees of severity rather than using separate disease classifications for HIV infection without AIDS and acquired immunodeficiency syndrome (AIDS).

Since the inception of the annual summary report, HIV has been depicted as two conditions, HIV infection without AIDS and AIDS, respectively. This artificial separation served a purpose at the time. However, with advances in the clinical and epidemiologic experiences with HIV infection, HIV disease is now viewed as a spectrum condition; progressing from early stage of infection to full-blown symptomatic infection.

In 2002, Pennsylvania promulgated public health regulations revising the reportability of adult and pediatric AIDS, adding HIV, CD4 count (<200 cells/uL or <14%), detectable viral load and perinatal exposure to HIV. The new regulations took effect on October 18, 2002 and active surveillance was conducted retrospectively to January 1, 2000. Since that time, HIV reporting has been ongoing statewide with the exception of the county of Philadelphia where it did not become reportable by name until October 2005.

In addition, the US Centers for Disease Control and Prevention (CDC) has recently made changes to the HIV case definition, taking into account advances in testing and detection. This new case definition recognizes HIV infection as a disease with varying degrees of severity. For adults and adolescents (i.e., persons aged >13 years), the HIV infection classification system and the surveillance case definitions for HIV infection and AIDS were revised by the CDC in 2008 and combined into a single case definition for HIV infection. In addition, the HIV infection case definition for children aged <13 years and the AIDS case definition for children aged 18 months to <13 years were also revised. No changes were made to the HIV infection classification system, the 24 AIDS-defining conditions for children aged <13 years, or the AIDS case definition for children aged <18 months. These case definitions are intended for public health surveillance only and not as a guide for clinical diagnosis. CDC and the Council of State and Territorial Epidemiologists recommended that all states and territories conduct case surveillance of HIV infection and AIDS using the 2008 surveillance case definitions.

The data in previous years tables and figures were constructed separately for HIV infection without AIDS and AIDS. Most tables and figures now have HIV infection without AIDS combined with AIDS under one identity called HIV disease. Consequently, any comparison of this report to previous years should take into account these differences.

Question or comment can be directed to

Dr. Godwin Obiri, Director, HIV Surveillance & Epidemiology  
Bureau of Epidemiology  
717/783-0481 or e-mail: [gobiri@pa.gov](mailto:gobiri@pa.gov)

## Table of Contents

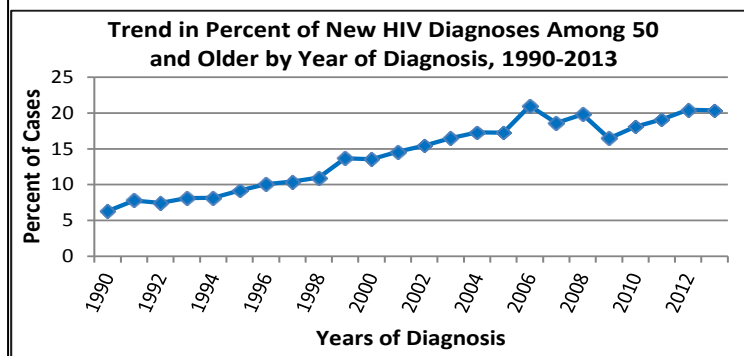
	PAGE
2014 HIV Surveillance Spotlight	4
Figure 1 Annual Diagnoses of AIDS and HIV infection Without AIDS, 1980-2013	5
Figure 2 Number of Cases of AIDS and HIV Infection Without AIDS by Current Vital Status and Year of Diagnosis	6
Table 1 Annual Diagnoses of HIV Disease for Adult/Adolescent and Pediatric by Year of Diagnosis	7
Table 2 Number of Cases of HIV Disease by Sex, Race/Ethnicity, and Year of Diagnosis, 2007-2013	8
Table 3 Number of Cases of HIV Disease by Age and Year of Diagnosis, 2007-2013	9
Table 4 Number of Cases of HIV Disease by Mode of Transmission and Year of Diagnosis, 2007-2013	10
Table 5 Number of HIV Disease by Mode of Transmission and Race/Ethnicity	11
Table 6 Cumulative Cases of HIV Disease by Vital Status and County of Residence, 2007-2013	12
Table 7 Annual Diagnoses of HIV Disease by County of Residence, 2009-2013	13
Figure 3 New Diagnoses of HIV Disease by County, 2011	14
Figure 4 Rate of New HIV Disease Diagnosed by County, 2011	15
Table 8 Characteristics of HIV Disease Cases by Time Interval of Diagnosis, 2007-2013	16
<b><i>Characteristics of HIV Disease For 7 Geographic Areas</i></b>	
Table 9 Characteristics of HIV Disease Cases by Time Interval of Diagnosis, AIDS Activities Coordinating Office	17
Table 10 Characteristics of HIV Disease Cases by Time Interval of Diagnosis, AIDSNET	18
Table 11 Characteristics of HIV Disease Cases by Time Interval of Diagnosis, Northeast Region	19
Table 12 Characteristics of HIV Disease Cases by Time Interval of Diagnosis, Northcentral Region	20
Table 13 Characteristics of HIV Disease Cases by Time Interval of Diagnosis, Southcentral Region	21
Table 14 Characteristics of HIV Disease Cases by Time Interval of Diagnosis, Southwest Region	22
Table 15 Characteristics of HIV Disease Cases by Time Interval of Diagnosis, Northwest Region	23
Figure 5 Confirmed Cases of Pediatric HIV Disease and Perinatal HIV Exposure, 2000-2013	24

# HIV Surveillance Spotlight

## HIV Diagnosis among Individuals Age 50 and Older

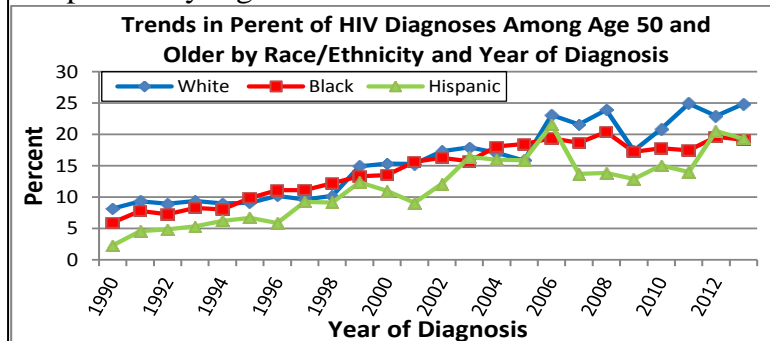
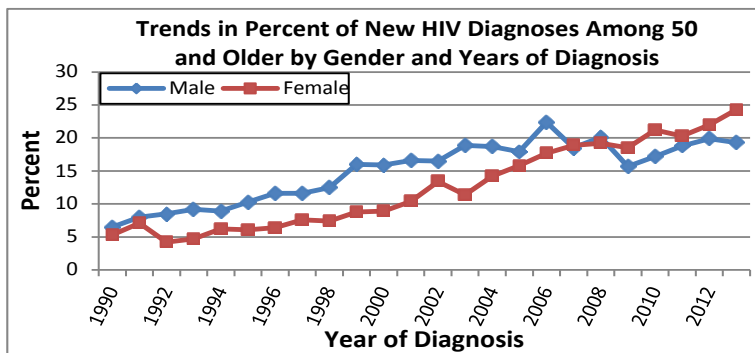
The HIV Surveillance Spotlight is a new addition to the Annual HIV Surveillance Summary Report. It is intended to highlight a specific area of significance in HIV disease burden in Pennsylvania. For this edition of the Annual Report we will showcase the trend in new HIV disease diagnoses among individuals 50 years old and above in Pennsylvania.

We examined all HIV cases 50 years and older with diagnosis date beginning in 1990 through



2013. HIV disease is seen increasingly in Pennsylvanians age 50 and older. Among the 1,340 people diagnosed with HIV disease in Pennsylvania in 2013, 273 (20.5%) were age 50 or older at the time of diagnosis. Approximately 44% of the estimated 33,912 Pennsylvania residents living with HIV were age 50 and older at the end of 2013.

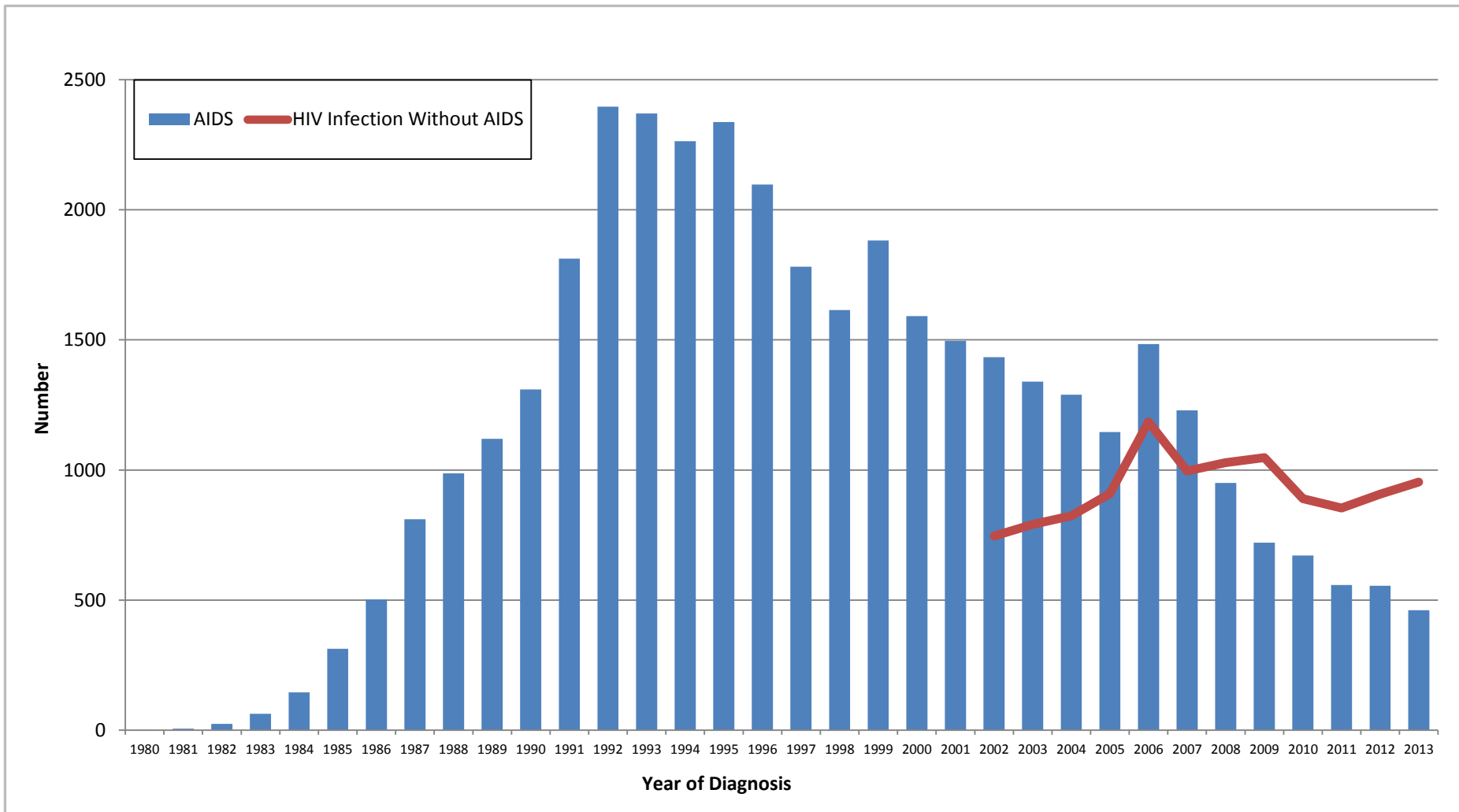
The observed increases over time have occurred in both gender groups. While the number of males 50 and older diagnosed with HIV remain far higher than their females counterparts, the proportion of females diagnosed each year since 2009 has been higher. While increases were seen in all racial groups, the proportion of whites 50 and older diagnosed with HIV infection has remained comparatively higher since 2006.



As survival time has increased substantially among people living with HIV the number of people age 50 and older living with HIV disease has also increased. This increase is partly due to treatment effects and newly diagnosed cases. Management of HIV infection and transmission will remain

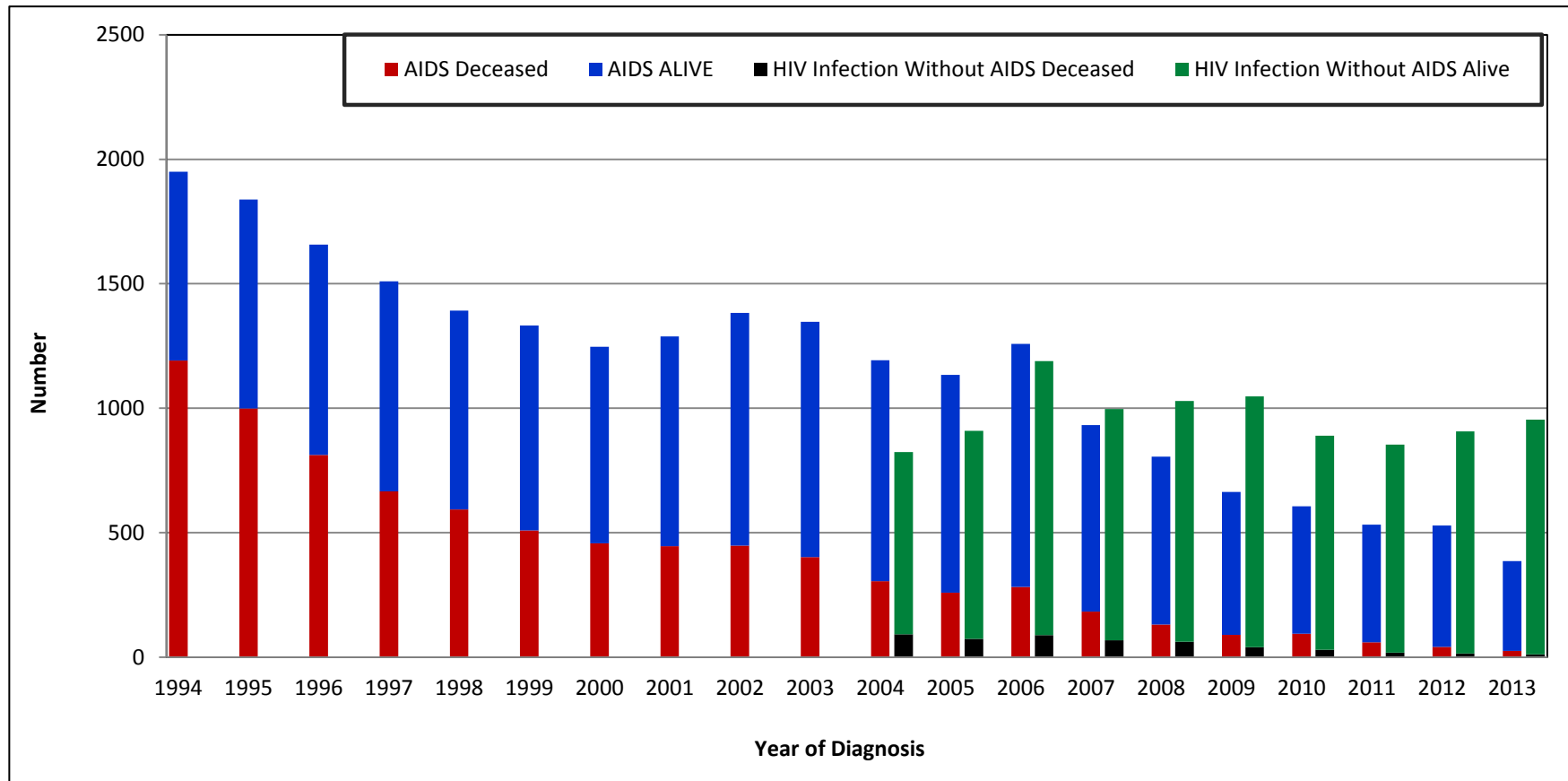
a concern among this age group.

**Figure 1**  
 Annual Diagnoses of AIDS and HIV Infection Without AIDS by Year of Diagnosis in Pennsylvania  
 1980-2013



Note: HIV Infection Without AIDS became reportable in PA in October 2002

**Figure 2**  
**Number of Cases of AIDS and HIV Infection Without AIDS in Pennsylvania**  
**Current Vital Status by Year of Diagnosis**  
**1994-2013**



Note: HIV Infection Without AIDS became reportable in PA in October 2002

**TABLE 1**

ANNUAL DIAGNOSES OF HIV DISEASE IN PENNSYLVANIA  
 AMONG ADULT/ADOLESCENT AND PEDIATRIC CASES  
 BY YEAR OF DIAGNOSIS, 1980-2013

YEAR OF DIAGNOSIS	ADULT/ADOLESCENT	PEDIATRIC*	TOTAL
1980	3	0	3
1981	8	1	9
1982	50	3	53
1983	107	5	112
1984	256	4	260
1985	777	26	803
1986	1,080	16	1,096
1987	1,550	16	1,566
1988	1,912	23	1,935
1989	2,443	24	2,467
1990	2,949	39	2,988
1991	2,964	36	3,000
1992	2,863	66	2,929
1993	2,353	68	2,421
1994	2,229	39	2,268
1995	2,145	43	2,188
1996	2,040	35	2,075
1997	1,891	28	1,919
1998	1,808	33	1,841
1999	1,734	32	1,766
2000	1,756	17	1,773
2001	1,782	21	1,803
2002 <sup>^</sup>	2,113	16	2,129
2003	2,118	20	2,138
2004	2,007	10	2,017
2005	2,031	13	2,044
2006	2,434	14	2,448
2007	1,920	10	1,930
2008	1,822	14	1,836
2009	1,707	5	1,712
2010	1,485	11	1,496
2011	1,381	6	1,387
2012	1,428	9	1,437
2013	1,336	4	1,340
<b>TOTAL</b>	<b>56,482</b>	<b>707</b>	<b>57,189</b>

<sup>^</sup> HIV Infection Without AIDS became a reportable condition in Pennsylvania in October 2002

\*Cases diagnosed with HIV disease before age 13



**Table 2**  
 Number of Cases of HIV Disease Diagnosed in Pennsylvania  
 Sex and Race/Ethnicity by Year of Diagnosis, 2007-2013.

	2008		2009		2010		2011		2012		*2013		1980-2013 TOTAL TO DATE	
	number	percent	number	percent	number	percent	number	percent	number	percent	number	percent	number	percent
<b>TOTAL MALE</b>	1,297	100	1,251	100	1,126	100	1,069	100	1,059	100	1,024	100	42,947	100
WHITE (NON-HISPANIC)	389	30	396	32	383	34	342	32	331	31	306	30	16,273	38
BLACK (NON-HISPANIC)	643	50	551	44	529	47	532	50	545	51	548	54	19,854	46
HISPANIC	216	17	254	20	182	16	172	16	160	15	138	13	5,464	13
ASIAN/PACIFIC	0	0	2	0	2	0	0	0	0	0	1	0	242	1
NATIVE AMERICAN	1	0	1	0	1	0	0	0	2	0	5	0	33	0
MULTIPLE RACE	48	4	47	4	29	3	23	2	21	2	26	3	1,081	3
<b>TOTAL FEMALE</b>	527	100	448	100	359	100	311	100	363	100	296	100	14,242	100
WHITE (NON-HISPANIC)	100	19	75	17	72	20	67	22	71	20	64	22	3,091	22
BLACK (NON-HISPANIC)	303	57	249	56	213	59	206	66	224	62	188	64	8,374	59
HISPANIC	87	17	102	23	64	18	28	9	54	15	33	11	2,215	16
ASIAN/PACIFIC	4	1	4	1	3	1	5	2	6	2	7	2	69	0
NATIVE AMERICAN	0	0	1	0	1	0	0	0	1	0	0	0	18	0
MULTIPLE RACE	33	6	17	4	6	2	5	2	7	2	4	1	475	3
<b>TOTAL</b>	1,824	100	1,699	100	1,485	100	1,380	100	1,422	100	1,320	100	57,189	100

\*Reduced numbers may be partially due to reporting delays.

Note: Percentages may not add to 100% due to 'rounding'.

**Table 3**  
 Number of Cases of HIV Disease Diagnosed in Pennsylvania  
 Age by Year of Diagnosis, 2008-2013

	2008		2009		2010		2011		2012		2013		1980-2013 TOTAL TO DATE	
	number	percent	number	percent	number	percent	number	percent	number	percent	number	percent	number	percent
<b>ALL AGES</b>	1,836	100	1712	100	1496	100	1,387	100	1,437	100	1,340	100	57,189	100
<b>0-12</b>	14	1	5	0	11	1	6	0	9	1	4	0	707	1
<b>13-19</b>	102	6	82	5	82	5	71	5	67	5	66	5	1,723	3
<b>20-29</b>	429	23	483	28	425	28	406	29	448	31	411	31	13,624	24
<b>30-39</b>	407	22	392	23	356	24	309	22	299	21	310	23	20,226	35
<b>40-49</b>	530	29	464	27	351	23	332	24	326	23	270	20	13,849	24
<b>OVER 49</b>	354	19	286	17	271	18	263	19	288	20	279	21	7,060	12

\*Reduced numbers may be partially due to reporting delays.

Note: Percentages may not add to 100% due to 'rounding'.

**Table 4**  
 Number of Cases of HIV Disease in Pennsylvania  
 Mode of Transmission by Year of Diagnosis, 2008-2013.

	2008		2009		2010		2011		2012		2013		TOTAL TO DATE 1980-2013	
	number	percent	number	percent	number	percent	number	percent	number	percent	number	percent	number	percent
ALL MODES	1,836	100	1,712	100	1,496	100	1,387	100	1,437	100	1,340	100	57,189	100
MEN SEX W/MEN (MSM)	628	34	667	39	650	43	614	44	635	44	655	49	21,159	37
INJECTING DRUG USE (IDU)	227	12	175	10	124	8	98	7	98	7	80	6	14,912	26
MSM & IDU	43	2	38	2	34	2	23	2	27	2	14	1	2,529	4
COAGULATION DISORDER	0	0	0	0	0	0	0	0	0	0	0	0	267	0
HETEROSEXUAL CONTACT	827	45	542	32	557	37	534	39	489	34	445	33	14,401	25
TRANSFUSION RECEIVED	0	0	0	0	0	0	0	0	0	0	0	0	222	0
UNDETERMINED/OTHER	94	5	283	17	118	8	111	8	179	12	141	11	2,979	5
ALL PEDIATRIC MODES**	17	1	7	0	13	1	7	1	9	1	5	0	720	1

\*Reduced numbers may be partially due to reporting delays.

\*\*Includes adult cases that had pediatric modes of transmission (e.g., perinatal exposure)

Note: Percentages may not add to 100% due to 'rounding'.

**Table 5**  
**Number of HIV Disease in Pennsylvania**  
**Mode of Transmission by Race/Ethnicity**  
**1980-1990, 1991-2000 and 2001-2013**

	WHITE NON-HISPANIC		BLACK NON-HISPANIC		HISPANIC		ASIAN/PACIFIC		NATIVE AMERICAN		MULTIPLE RACE		ALL RACES	
	number	percent	number	percent	number	percent	number	percent	number	percent	number	percent	number	percent
<b>1980-1990</b>														
ALL MODES	5,524	100	4,298	100	1,305	100	25	100	5	100	136	100	11,293	100
MEN SEX W/MEN (MSM)	3,790	69	1,781	41	225	17	19	76	2	40	54	40	5,871	52
INJECTING DRUG USE (IDU)	702	13	1,561	36	786	60	1	4	2	40	51	38	3,103	27
MSM & IDU	318	6	413	10	88	7	1	4	0	0	23	17	843	7
COAGULATION DISORDER	194	4	10	0	6	0	0	0	0	0	0	0	210	2
HETEROSEXUAL CONTACT	236	4	342	8	145	11	2	8	0	0	6	4	731	6
TRANSFUSION RECEIVED	118	2	18	0	3	0	1	4	0	0	0	0	140	1
ALL PEDIATRIC MODES	55	1	70	2	29	2	0	0	1	20	2	1	157	1
UNDETERMINED/OTHER	111	2	103	2	23	2	1	4	0	0	0	0	238	2
<b>1991-2000</b>														
ALL MODES	6,898	100	11,792	100	2,895	100	67	100	16	100	511	100	22,179	100
MEN SEX W/MEN (MSM)	3,738	54	2,870	24	395	14	32	48	8	50	140	27	7,183	32
INJECTING DRUG USE (IDU)	1,507	22	4,850	41	1,411	49	6	9	2	13	194	38	7,970	36
MSM & IDU	313	5	616	5	124	4	0	0	0	0	46	9	1,099	5
COAGULATION DISORDER	42	1	4	0	1	0	0	0	0	0	1	0	48	0
HETEROSEXUAL CONTACT	938	14	2,866	24	750	26	17	25	4	25	105	21	4,680	21
TRANSFUSION RECEIVED	43	1	21	0	4	0	5	7	0	0	1	0	74	0
ALL PEDIATRIC MODES	53	1	253	2	80	3	2	3	0	0	9	2	397	2
UNDETERMINED/OTHER	264	4	312	3	130	4	5	7	2	13	15	3	728	3
<b>2001-2013*</b>														
ALL MODES	6,942	100	12,138	100	3,479	100	219	100	30	100	909	100	23,717	100
MEN SEX W/MEN (MSM)	3,540	51	3,390	28	795	23	83	38	11	37	286	31	8,105	34
INJECTING DRUG USE (IDU)	902	13	1,875	15	879	25	12	5	2	7	169	19	3,839	16
MSM & IDU	224	3	221	2	99	3	3	1	1	3	39	4	587	2
COAGULATION DISORDER	6	0	1	0	2	0	0	0	0	0	0	0	9	0
HETEROSEXUAL CONTACT	1,585	23	5,663	47	1,305	38	88	40	16	53	333	37	8,990	38
TRANSFUSION RECEIVED	3	0	4	0	1	0	0	0	0	0	0	0	8	0
ALL PEDIATRIC MODES	20	0	98	1	37	1	4	2	0	0	7	1	166	1
UNDETERMINED/OTHER	662	10	886	7	361	10	29	13	0	0	75	8	2,013	8

\* The more recent pattern, 2001-2012 is better reflection of current distribution of cases than the earlier periods, 1980-1990 and 1991-2000.

Page 11

Note: Percentages may not add to 100% due to 'rounding'.

**Table 6**

Cumulative Cases for HIV Disease in Pennsylvania  
Mortality Status and County of Residence, 1980-2013

COUNTY	ALIVE	REPORTED DEAD	CUMULATIVE CASES
PHILADELPHIA	17,809	12,752	30,561
ALLEGHENY	2,626	1,828	4,454
DELAWARE	1,600	1,178	2,778
MONTGOMERY	1,072	711	1,783
DAUPHIN	981	652	1,633
BERKS	954	578	1,532
LEHIGH	1,003	467	1,470
LANCASTER	834	517	1,351
BUCKS	786	525	1,311
YORK	752	431	1,183
CHESTER	506	441	947
NORTHAMPTON	407	277	684
CUMBERLAND	389	188	577
LUZERNE	339	225	564
ERIE	315	194	509
LACKAWANNA	288	170	458
MONROE	273	172	445
LYCOMING	228	167	395
WESTMORELAND	162	162	324
CENTRE	164	64	228
LEBANON	136	92	228
SCHUYLKILL	131	83	214
WASHINGTON	116	96	212
CAMBRIA	127	84	211
BEAVER	110	100	210
FRANKLIN	131	75	206
UNION	128	45	173
BLAIR	78	67	145
NORTHUMBERLAND	76	58	134
FAYETTE	87	46	133
PIKE	91	37	128
SOMERSET	85	41	126
BUTLER	77	48	125
MERCER	69	54	123
ADAMS	72	48	120

COUNTY	PRESUMED ALIVE	REPORTED DEAD	CUMULATIVE CASES
WAYNE	65	55	120
CARBON	79	39	118
HUNTINGDON	71	40	111
CRAWFORD	64	41	105
CLEARFIELD	67	30	97
LAWRENCE	45	45	90
COLUMBIA	58	25	83
INDIANA	38	29	67
BRADFORD	38	27	65
ARMSTRONG	33	30	63
MCKEAN	30	20	50
GREENE	23	24	47
VENANGO	20	27	47
PERRY	28	18	46
BEDFORD	24	17	41
TIOGA	21	18	39
WARREN	25	11	36
MIFFLIN	20	15	35
SUSQUEHANNA	16	15	31
MONTOUR	17	10	27
JEFFERSON	15	11	26
SNYDER	17	9	26
WYOMING	13	13	26
CLARION	20	5	25
JUNIATA	17	6	23
CLINTON	12	8	20
FOREST	11	2	13
ELK	7	4	11
FULTON	8	1	9
SULLIVAN	6	3	9
POTTER	2	6	8
CAMERON	0	0	0
STATE TOTAL	33,912	23,277	57,189

**Table 7**  
Annual Diagnoses of HIV Disease in Pennsylvania  
By County of Residence  
2010-2013

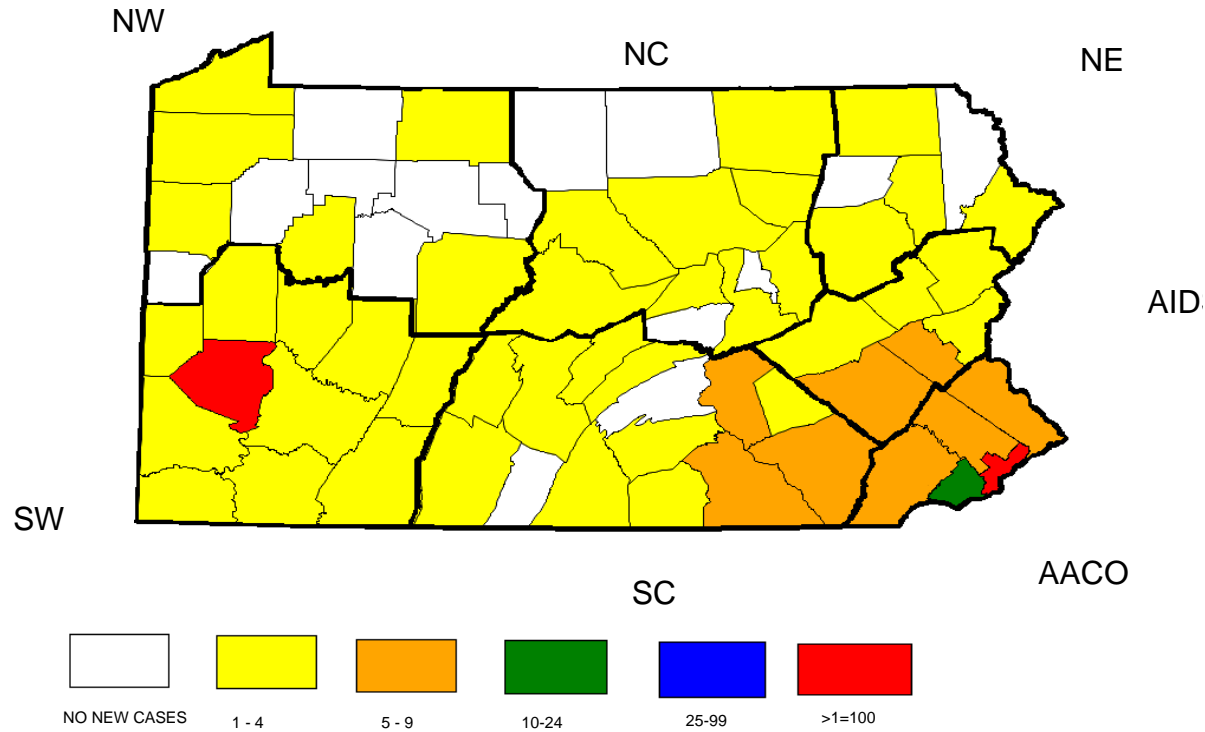
COUNTY	2010	2011	2012	2013	2012 RATE PER 100,000*
ADAMS	4	8	5	5	4.93
ALLEGHENY	133	130	125	121	10.17
ARMSTRONG	0	3	2	0	2.92
BEAVER	11	7	6	4	3.52
BEDFORD	2	1	5	0	10.14
BERKS	34	27	38	38	9.19
BLAIR	2	3	3	2	2.36
BRADFORD	1	3	2	0	3.19
BUCKS	35	45	42	45	6.70
BUTLER	4	7	4	3	2.16
CAMBRIA	4	3	10	4	7.06
CAMERON	0	0	0	0	0.00
CARBON	9	5	6	4	9.23
CENTRE	9	3	7	8	4.51
CHESTER	20	32	33	20	6.51
CLARION	1	2	2	0	5.04
CLEARFIELD	5	1	1	0	1.23
CLINTON	1	0	3	0	7.59
COLUMBIA	5	5	4	1	5.98
CRAWFORD	1	5	5	1	5.71
CUMBERLAND	14	9	9	17	3.77
DAUPHIN	40	57	40	31	14.83
DELAWARE	87	84	93	72	16.57
ELK	1	0	0	0	0.00
ERIE	20	10	9	14	3.21
FAYETTE	1	4	5	7	3.69
FOREST	1	1	0	0	0.00
FRANKLIN	11	8	3	5	1.98
FULTON	2	0	0	1	0.00
GREENE	2	0	2	1	5.25
HUNTINGDON	1	0	1	1	2.18
INDIANA	0	2	3	1	3.40
JEFFERSON	1	0	0	0	0.00
JUNIATA	2	0	1	0	4.02
LACKAWANNA	10	16	15	14	6.99

COUNTY	2009	2010	2011	2012	2012 RATE PER 100,000*
LANCASTER	44	40	29	33	5.50
LAWRENCE	3	4	0	2	0.00
LEBANON	3	7	10	6	7.39
LEHIGH	40	51	44	50	12.39
LUZERNE	22	17	17	15	5.30
LYCOMING	3	5	6	2	5.12
MCKEAN	2	1	2	2	4.64
MERCER	1	4	2	1	1.73
MIFFLIN	0	1	1	1	2.14
MONROE	16	11	12	17	7.11
MONTGOMERY	69	41	45	59	5.57
MONTOUR	2	0	0	1	0.00
NORTHAMPTON	22	7	4	7	1.34
NORTHUMBERLAND	4	0	1	2	1.06
PERRY	0	1	0	0	0.00
PHILADELPHIA	726	661	721	664	46.59
PIKE	4	3	4	14	7.03
POTTER	0	0	0	0	0.00
SCHUYLKILL	4	4	6	2	4.08
SNYDER	1	0	0	0	0.00
SOMERSET	2	2	2	2	2.60
SULLIVAN	0	0	1	0	15.48
SUSQUEHANNA	1	0	1	0	2.34
TIOGA	1	0	0	0	0.00
UNION	1	4	5	2	11.12
VENANGO	1	1	0	1	0.00
WARREN	1	0	0	0	0.00
WASHINGTON	5	3	7	5	3.35
WAYNE	0	0	0	0	0.00
WESTMORELAND	8	5	9	2	2.48
WYOMING	0	0	0	1	0.00
YORK	36	33	23	29	5.25
STATE TOTAL	1,496	1,387	1,436	1,340	11.25

\*Rates based on 2012 estimated population

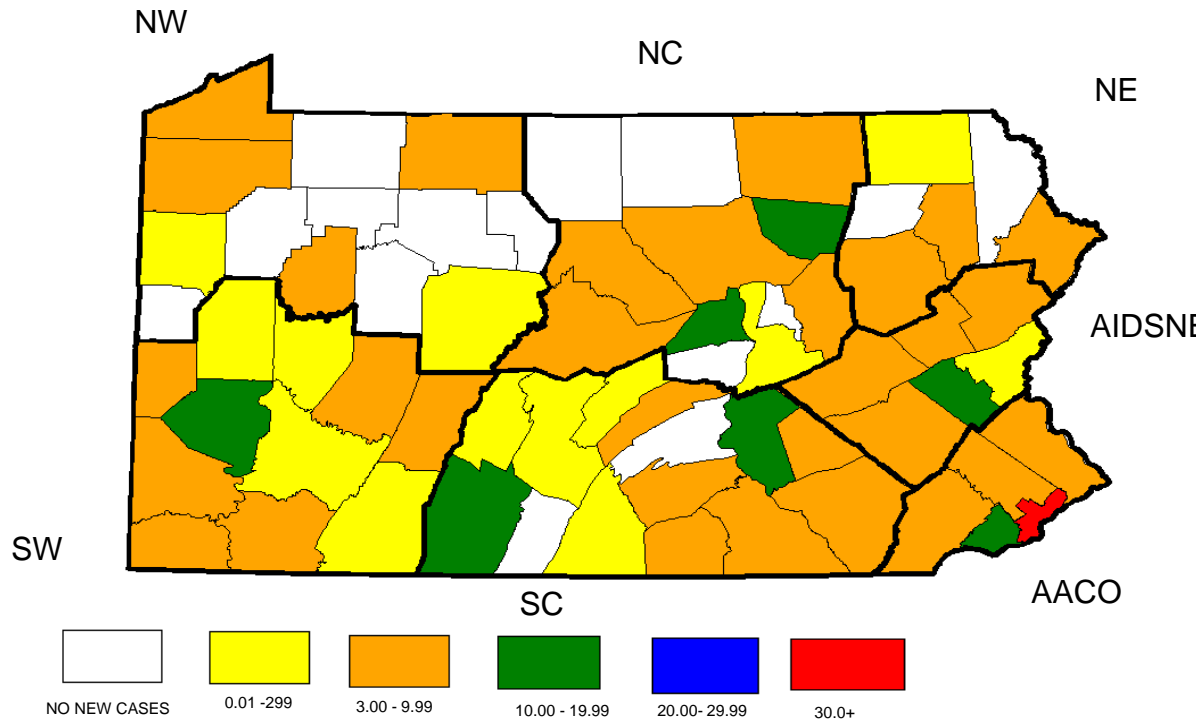
**Figure 3**

New HIV Disease Diagnosed in Pennsylvania  
Number of Cases for Each County, 2012



AACO=AIDS Activities Coordinating Office  
AIDSNET = AIDSNET  
NE = Northeastern Regional AIDS Planning Coalition  
NC = North Central District AIDS Coalition  
SC = South Central Pennsylvania AIDS Planning Coalition  
SW = Southwest Pennsylvania AIDS Planning Coalition  
NW = Northwest Pennsylvania Rural AIDS Alliance

**Figure 4**  
 HIV Disease Diagnosed In Pennsylvania  
 Rate\* (per 100,000) for Each County, 2012



AACO=AIDS Activities Coordinating Office  
 AIDSNET = AIDSNET  
 NE = Northeastern Regional AIDS Planning Coalition  
 NC = North Central District AIDS Coalition  
 SC = South Central Pennsylvania AIDS Planning Coalition  
 SW = Southwest Pennsylvania AIDS Planning Coalition  
 NW = Northwest Pennsylvania Rural AIDS Alliance

\* Rates are based on 2012 estimated population



**Table 8**  
HIV Disease in Pennsylvania  
Characteristics of Cases by Interval of Diagnosis, 2008-2013.

		BEFORE 2008		2008		2009		2010		2011		2012		2013		TOTAL TO DEC 31, 2013*		CURRENTLY LIVING DEC 31, 2013	
		number	percent	number	percent	number	percent	number	percent	number	percent	number	percent	number	percent	number	percent	number	percent
	TOTAL CASES	47,983	100	1,835	100	1,712	100	1,496	100	1,387	100	1,436	100	1,340	100	57,189	100	33,912	100
SEX	MALE	36,044	75	1,309	71	1,264	74	1,137	76	1,076	78	1,073	75	1,044	78	42,947	75	24,309	72
	FEMALE	11,939	25	526	29	448	26	359	24	311	22	363	25	296	22	14,242	25	9,603	28
RACE/ETHNICITY	WHITE	16,769	35	489	27	471	28	455	30	409	29	401	28	370	28	19,364	34	10,586	31
	BLACK	23,498	49	945	51	800	47	742	50	738	53	769	54	736	55	28,228	49	16,632	49
	HISPANIC	6,189	13	303	17	356	21	246	16	200	14	214	15	171	13	7,679	13	5,200	15
	ASIAN/PACIFIC	199	0	16	1	19	1	16	1	12	1	21	1	28	2	311	1	248	1
	NATIVE AMERICAN	38	0	1	0	2	0	2	0	0	0	3	0	5	0	51	0	39	0
	MULTIRACE	1,290	3	81	4	64	4	35	2	28	2	28	2	30	2	1,556	3	1,207	4
AGE (YEARS)	< 13	659	1	13	1	5	0	11	1	6	0	9	1	4	0	707	1	525	2
	13 - 19	1,253	3	102	6	82	5	82	5	71	5	67	5	66	5	1,723	3	1,421	4
	20 - 29	11,023	23	429	23	483	28	425	28	406	29	447	31	411	31	13,624	24	9,171	27
	30 - 39	18,153	38	407	22	392	23	356	24	309	22	299	21	310	23	20,226	35	11,313	33
	40 - 49	11,576	24	530	29	464	27	351	23	332	24	326	23	270	20	13,849	24	7,942	23
	Over 49	5,319	11	354	19	286	17	271	18	263	19	288	20	279	21	7,060	12	3,540	10
MODE OF TRANSMISSION	MEN SEX W/MEN (MSM)	17,311	36	628	34	667	39	650	43	614	44	634	44	655	49	21,159	37	12,215	36
	INJECTING DRUG (IDU)	14,110	29	227	12	175	10	124	8	98	7	98	7	80	6	14,912	26	6,936	20
	MSM & IDU	2,350	5	43	2	38	2	34	2	23	2	27	2	14	1	2,529	4	1,210	4
	COAGULATION DISORDER	267	1	0	0	0	0	0	0	0	0	0	0	0	0	267	0	71	0
	HETEROSEXUAL CONTACT	11,007	23	827	45	542	32	557	37	534	39	489	34	445	33	14,401	25	10,745	32
	TRANSFUSION	222	0	0	0	0	0	0	0	0	0	0	0	0	0	222	0	31	0
	ALL PEDIATRIC	663	1	16	1	7	0	13	1	7	1	9	1	5	0	720	1	536	2
	UNDETERMINED/OTHER	2,053	4	94	5	283	17	118	8	111	8	179	12	141	11	2,979	5	2,168	6
COALITION AREA	AIDS ACTIVITIES COORDINATING OFFICE	31,408	65	1,235	67	1,143	67	937	63	863	62	934	65	860	64	37,380	65	21,773	64
	AIDSNET	3,728	8	155	8	122	7	125	8	105	8	110	8	118	9	4,463	8	2,847	8
	NORTHEASTERN REGIONAL HIV PLANNING COALITION	1,080	2	44	2	49	3	37	2	36	3	37	3	44	3	1,327	2	812	2
	NORTH CENTRAL DISTRICT AIDS COALITION	1,050	2	32	2	32	2	28	2	20	1	29	2	16	1	1,207	2	767	2
	SOUTH CENTRAL PENNSYLVANIA AIDS PLANNING COALITION	4,814	10	146	8	158	9	161	11	168	12	130	9	131	10	5,708	10	3,541	10
	SOUTHWEST PENNSYLVANIA AIDS PLANNING COALITION	4,943	10	195	11	173	10	170	11	166	12	175	12	150	11	5,972	10	3,484	10
	NORTHWEST PENNSYLVANIA RURAL AIDS ALLIANCE	960	2	28	2	35	2	38	3	29	2	21	1	21	2	1,132	2	688	2

\* Includes cases diagnosed prior to 2002

Cumulative are cases diagnosed through December 31, 2013 and reported through March 31, 2014.

Note: Percentages may not add to 100% due to 'rounding'.

**Table 9**  
HIV Disease in Pennsylvania  
Characteristics of Cases by Time Interval of Diagnosis

AIDS Activities Coordinating Office  
Bucks, Delaware, Chester, Montgomery, and Philadelphia Counties

		BEFORE 2008		2008		2009		2010		2011		2012		2013		TOTAL TO DEC 31, 2013*		CURRENTLY LIVING DEC 31, 2013	
		number	percent	number	percent	number	percent	number	percent	number	percent	number	percent	number	percent	number	percent	number	percent
	TOTAL CASES	31,408		1,235		1,143		937		863		934		860		37,380		21,773	
SEX	MALE	23,459	75	867	71	846	70	686	74	656	73	694	76	674	75	27,882	75	15,456	71
	FEMALE	7,949	25	368	29	297	30	251	26	207	27	240	24	186	25	9,498	25	6,317	29
RACE/ETHNICITY	WHITE	8,182	26	244	22	214	20	190	19	183	21	181	21	149	20	9,343	25	4,934	23
	BLACK	19,056	61	736	60	632	60	566	55	553	60	596	64	573	64	22,712	61	13,122	60
	HISPANIC	3,323	10	184	13	248	15	147	22	111	16	129	13	100	13	4,242	11	2,886	13
	ASIAN/PACIFIC	149	0	11	2	15	1	15	1	8	1	14	1	21	1	233	1	188	1
	NATIVE AMERICAN	26	0	1	0	2	0	1	0	0	0	3	0	5	0	38	0	32	0
	MULTIRACE	672	2	59	4	32	5	18	3	8	2	11	1	12	1	812	2	611	3
AGE (YEARS)	< 13	440	1	11	0	4	1	5	0	3	1	6	0	1	1	470	1	359	2
	13 - 19	847	3	71	6	58	6	53	5	50	6	43	6	47	4	1,169	3	974	4
	20 - 29	7,164	23	315	24	365	25	282	32	261	29	319	30	286	34	8,992	24	6,085	27
	30 - 39	11,683	38	262	23	256	21	221	22	195	24	189	23	192	20	12,998	35	7,104	33
	40 - 49	7,635	24	337	28	281	28	207	25	201	22	200	23	163	22	9,024	24	5,005	23
	Over 49	3,639	11	239	18	179	19	169	16	153	18	177	18	171	19	4,727	12	2,246	10
MODE OF TRANSMISSION	MSM	10,801	35	410	31	430	33	381	38	351	40	390	41	424	42	13,187	35	7,494	33
	IDU	9,825	32	154	15	112	13	86	10	64	9	66	7	39	7	10,346	28	4,647	23
	MSM/IDU	1,525	5	24	3	29	2	19	2	18	2	22	2	11	3	1,648	4	786	4
	COAGULATION DISORDER	64	0	0	0	0	0	0	0	0	0	0	0	0	0	64	0	18	0
	HETEROSEXUAL	8,006	25	590	48	340	48	405	30	400	44	398	46	353	43	10,492	28	7,771	35
	TRANSFUSION	99	0	0	0	0	0	0	0	0	0	0	0	0	0	99	0	10	0
	PEDIATRIC	440	1	11	0	4	1	6	0	4	1	6	0	2	1	473	1	360	2
	UNDETERMINED MODE	648	2	46	2	228	4	40	20	26	4	52	3	31	5	1,071	3	687	3
COUNTY	BUCKS	1,052	3	53	3	39	4	35	3	45	4	42	5	45	5	1,311	3	786	3
	CHESTER	789	2	26	3	27	2	20	2	32	2	33	3	20	3	947	3	506	2
	DELAWARE	2,227	7	104	8	111	8	87	10	84	9	93	9	72	10	2,778	7	1,600	7
	MONTGOMERY	1,429	5	78	5	62	6	69	5	41	7	45	5	59	5	1,783	5	1,072	5
	PHILADELPHIA	25,911	83	974	81	904	79	726	80	661	78	721	77	664	78	30,561	82	17,809	82

\* Includes cases diagnosed prior to 2002

Cumulative are cases diagnosed through December 31, 2013 and reported through March 31, 2014.

Note: Percentages may not add to 100% due to 'rounding'.

**Table 10**  
HIV Disease in Pennsylvania  
Characteristics of Cases by Time Interval of Diagnosis

AIDSNET  
Berks, Carbon, Lehigh, Monroe, Northampton, and Schuylkill Counties

		BEFORE 2008		2008		2009		2010		2011		2012		2013		TOTAL TO DEC 31, 2013*		CURRENTLY LIVING DEC 31, 2013	
		number	percent	number	percent	number	percent	number	percent	number	percent	number	percent	number	percent	number	percent	number	percent
	TOTAL CASES	3,728		155		122		125		105		110		118		4,463		2,847	
SEX	MALE	2,528	68	98	68	77	63	96	65	77	76	78	74	89	68	3,043	68	1,850	65
	FEMALE	1,200	32	57	32	45	37	29	35	28	24	32	26	29	32	1,420	32	997	35
RACE/ETHNICITY	WHITE	1,452	39	55	34	43	36	55	35	31	43	38	29	50	33	1,724	39	975	34
	BLACK	656	18	28	20	28	18	28	23	33	24	25	31	32	23	830	18	574	20
	HISPANIC	1,469	39	64	41	46	40	40	38	35	32	44	33	31	41	1,729	39	1,142	41
	ASIAN/PACIFIC	9	0	0	1	0	0	0	0	0	0	1	0	2	1	12	0	8	0
	NATIVE AMERICAN	2	0	0	0	0	0	0	0	0	0	0	0	0	0	2	0	2	0
	MULTIRACE	140	4	8	5	5	6	2	4	6	2	2	6	3	1	166	4	146	5
AGE (YEARS)	< 13	64	2	1	2	1	1	2	1	0	1	1	0	1	0	69	2	53	2
	13 - 19	94	2	6	3	3	4	3	3	1	2	5	1	3	5	115	3	91	3
	20 - 29	852	23	25	20	20	16	34	17	27	28	27	25	23	25	1,008	23	687	24
	30 - 39	1,458	40	47	28	31	30	22	24	22	19	20	22	22	15	1,622	37	954	34
	40 - 49	893	24	51	27	42	33	38	34	25	29	24	24	32	23	1,105	25	715	25
	Over 49	367	9	25	20	25	16	26	22	30	21	33	29	38	30	544	12	347	12
MODE OF TRANSMISSION	MSM	885	24	38	20	39	25	54	33	39	43	39	39	46	36	1,140	25	689	24
	IDU	1,270	35	20	14	17	13	13	15	12	11	13	11	8	12	1,353	31	722	26
	MSM/IDU	141	4	5	2	1	3	3	0	3	2	2	3	2	2	157	4	91	3
	COAGULATION DISORDER	40	1	0	0	0	0	0	0	0	0	0	0	0	0	40	1	15	1
	HETEROSEXUAL	845	21	73	52	59	47	37	48	33	32	34	31	32	27	1,113	25	836	29
	TRANSFUSION	20	1	0	0	0	0	0	0	0	0	0	0	0	0	20	0	5	0
	PEDIATRIC	67	2	3	2	2	3	2	2	0	1	1	0	0	2	75	2	59	2
	UNDETERMINED MODE	460	13	16	10	4	11	16	3	18	11	21	16	30	22	565	12	430	15
COUNTY	BERKS	1,309	35	49	36	37	31	34	32	27	28	38	25	38	32	1,532	34	954	34
	CARBON	83	2	4	1	7	3	9	5	5	7	6	5	4	6	118	3	79	3
	LEHIGH	1,177	31	61	41	47	40	40	38	51	32	44	49	50	41	1,470	33	1,003	35
	MONROE	358	10	16	7	15	11	16	12	11	12	12	10	17	11	445	10	273	9
	NORTHAMPTON	619	17	17	12	8	11	22	7	7	18	4	7	7	4	684	16	407	15
	SCHUYLKILL	182	5	8	4	8	5	4	7	4	4	6	4	2	6	214	5	131	5

\* Includes cases diagnosed prior to 2002

Cummulative are cases diagnosed through December 31, 2013 and reported through March 31, 2014.

Note: Percentages may not add to 100% due to 'rounding'.

**Table 11**  
HIV Disease in Pennsylvania  
Characteristics of Cases by Time Interval of Diagnosis  
**NORTHEASTERN REGIONAL HIV PLANNING COALITION**  
Lackawanna, Luzerne, Pike, Susquehanna, Wayne, and Wyoming Counties

		BEFORE 2008		2008		2009		2010		2011		2012		2013		TOTAL TO DEC 31, 2013*		CURRENTLY LIVING DEC 31, 2013	
		number	percent	number	percent	number	percent	number	percent	number	percent	number	percent	number	percent	number	percent	number	percent
	TOTAL CASES	1,080		44		49		37		36		37		44		1,327		812	
SEX	MALE	838	78	35	65	34	80	27	69	29	73	29	80	27	78	1,019	77	584	73
	FEMALE	242	22	9	35	15	20	10	31	7	27	8	20	17	22	308	23	228	27
RACE/ETHNICITY	WHITE	689	64	19	53	19	44	22	39	22	59	23	60	22	61	816	62	452	56
	BLACK	207	19	14	20	13	31	7	27	8	19	8	23	14	22	271	20	185	22
	HISPANIC	133	12	8	18	14	18	7	29	6	19	6	17	5	17	179	14	131	17
	ASIAN/PACIFIC	2	0	0	0	1	0	0	0	2	0	0	0	0	0	3	0	3	1
	NATIVE AMERICAN	3	0	0	0	0	0	1	0	0	0	3	0	0	0	4	0	2	0
	MULTIRACE	46	4	3	8	2	7	0	4	0	0	0	0	3	0	54	4	39	5
AGE (YEARS)	< 13	19	2	0	0	0	0	0	0	0	0	0	0	1	0	20	2	15	2
	13 - 19	22	2	5	4	3	11	1	6	1	3	1	3	0	3	33	3	29	4
	20 - 29	218	20	7	22	9	16	6	18	6	16	7	17	16	22	269	20	183	22
	30 - 39	397	38	8	18	12	18	8	24	11	22	5	31	10	14	451	34	262	32
	40 - 49	310	28	15	33	18	33	16	37	13	43	9	34	9	22	390	30	230	29
	Over 49	114	10	9	22	7	22	6	14	5	16	15	14	8	39	164	12	93	11
MODE OF TRANSMISSION	MSM	353	33	16	22	16	38	15	33	14	41	20	37	15	50	449	34	259	31
	IDU	316	30	5	8	7	9	3	14	4	8	4	11	7	8	346	26	166	20
	MSM/IDU	59	6	3	2	0	7	1	0	1	3	0	3	0	0	64	5	30	4
	COAGULATION DISORDER	13	1	0	0	0	0	0	0	0	0	0	0	0	0	13	1	5	1
	HETEROSEXUAL	179	14	19	65	23	44	18	47	15	49	9	43	11	25	274	20	222	27
	TRANSFUSION	5	0	0	0	0	0	0	0	0	0	0	0	0	0	5	0	1	0
	PEDIATRIC	19	2	1	0	1	2	0	2	0	0	0	0	1	0	22	2	17	2
	UNDETERMINED MODE	136	13	0	2	2	0	0	4	2	0	4	6	10	17	154	12	112	14
COUNTY	LACKAWANNA	366	34	18	27	19	38	10	39	16	27	15	43	14	42	458	34	288	36
	LUZERNE	451	41	18	57	24	42	22	49	17	59	17	49	15	47	564	43	339	43
	PIKE	95	9	5	8	3	11	4	6	3	11	4	9	14	8	128	9	91	10
	SUSQUEHANNA	28	3	0	2	1	0	1	2	0	3	1	0	0	3	31	2	16	2
	WAYNE	116	11	2	6	2	7	0	4	0	0	0	0	0	0	120	10	65	8
	WYOMING	24	2	1	0	0	2	0	0	0	0	0	0	1	0	26	2	13	2

\* Includes cases diagnosed prior to 2002

Cummulative are cases diagnosed through December 31, 2013 and reported through March 31, 2014.

Note: Percentages may not add to 100% due to 'rounding' .

**Table 12**  
HIV Disease in Pennsylvania  
Characteristics of Cases by Time Interval of Diagnosis

**NORTH CENTRAL DISTRICT AIDS COALITION**  
Bradford, Centre, Clinton, Columbia, Lycoming, Montour, Northumberland  
Potter, Snyder, Sullivan, Tioga, and Union Counties

		BEFORE 2008		2008		2009		2010		2011		2012		2013		TOTAL TO DEC 31, 2013*		CURRENTLY LIVING DEC 31, 2013	
		number	percent	number	percent	number	percent	number	percent	number	percent	number	percent	number	percent	number	percent	number	percent
	TOTAL CASES	1,050	100	32	100	32	100	28	100	20	100	29	100	16	100	1,207	100	767	100
SEX	MALE	786	75	24	75	26	81	25	89	18	90	26	90	12	75	917	76	573	75
	FEMALE	264	25	8	25	6	19	3	11	2	10	3	10	4	25	290	24	194	25
RACE/ETHNICITY	WHITE	533	51	12	38	17	53	18	64	8	40	6	21	6	38	600	50	353	46
	BLACK	352	34	9	28	7	22	4	14	6	30	17	59	7	44	402	33	270	35
	HISPANIC	129	12	8	25	5	16	5	18	5	25	4	14	2	13	158	13	103	13
	ASIAN/PACIFIC	4	0	3	9	0	0	0	0	0	0	0	0	0	0	7	1	7	1
	NATIVE AMERICAN	0	0	0	0	0	0	0	0	0	0	0	0	0	0	0	0	0	0
	MULTIRACE	32	3	0	0	3	9	1	4	1	5	2	7	1	6	40	3	34	4
AGE (YEARS)	< 13	12	1	0	0	0	0	1	4	0	0	0	0	0	0	13	1	10	1
	13 - 19	21	2	2	6	0	0	1	4	0	0	2	7	1	6	27	2	24	3
	20 - 29	234	22	6	19	7	22	9	32	4	20	9	31	6	38	275	23	184	24
	30 - 39	425	40	7	22	6	19	5	18	4	20	5	17	3	19	455	38	271	35
	40 - 49	246	23	11	34	16	50	7	25	9	45	7	24	2	13	298	25	198	26
	Over 49	112	11	6	19	3	9	5	18	3	15	6	21	4	25	139	12	80	10
MODE OF TRANSMISSION	MSM	341	32	6	19	12	38	17	61	7	35	14	48	4	25	401	33	247	32
	IDU	363	35	4	13	7	22	1	4	0	0	4	14	2	13	381	32	210	27
	MSM/IDU	72	7	2	6	1	3	2	7	0	0	0	0	1	6	78	6	41	5
	COAGULATION DISORDER	16	2	0	0	0	0	0	0	0	0	0	0	0	0	16	1	5	1
	HETEROSEXUAL	149	14	19	59	11	34	3	11	8	40	6	21	3	19	199	16	155	20
	TRANSFUSION	7	1	0	0	0	0	0	0	0	0	0	0	0	0	7	1	2	0
	PEDIATRIC	12	1	0	0	0	0	1	4	0	0	0	0	0	0	13	1	10	1
	UNDETERMINED MODE	90	9	1	3	1	3	4	14	5	25	5	17	6	38	112	9	97	13
COUNTY	BRADFORD	55	5	1	3	3	9	1	4	3	15	2	7	0	0	65	5	38	5
	CENTRE	172	16	13	41	16	50	9	32	3	15	7	24	8	50	228	19	164	21
	CLINTON	16	2	0	0	0	0	1	4	0	0	3	10	0	0	20	2	12	2
	COLUMBIA	65	6	0	0	3	9	5	18	5	25	4	14	1	6	83	7	58	8
	LYCOMING	362	34	10	31	7	22	3	11	5	25	6	21	2	13	395	33	228	30
	MONTOUR	24	2	0	0	0	0	2	7	0	0	0	0	1	6	27	2	17	2
	NORTHUMBERLAND	120	11	4	13	3	9	4	14	0	0	1	3	2	13	134	11	76	10
	POTTER	8	1	0	0	0	0	0	0	0	0	0	0	0	0	8	1	2	0
	SNYDER	24	2	1	3	0	0	1	4	0	0	0	0	0	0	26	2	17	2
	SULLIVAN	7	1	1	3	0	0	0	0	0	0	1	3	0	0	9	1	6	1
	TIOGA	37	4	1	3	0	0	1	4	0	0	0	0	0	0	39	3	21	3
	UNION	160	15	1	3	0	0	1	4	4	20	5	17	2	13	173	14	128	17

\* Includes cases diagnosed prior to 2002

Cummulative are cases diagnosed through December 31, 2013 and reported through March 31, 2014.

Note: Percentages may not add to 100% due to 'rounding'.

**Table 13**  
HIV Disease in Pennsylvania  
Characteristics of Cases by Time Interval of Diagnosis

**SOUTH CENTRAL PENNSYLVANIA AIDS PLANNING COALITION**  
Adams, Bedford, Blair, Cumberland, Dauphin, Franklin, Fulton, Huntingdon,  
Juniata, Lancaster, Lebanon, Mifflin, Perry, and York Counties

		BEFORE 2008		2008		2009		2010		2011		2012		2013		TOTAL TO DEC 31, 2013*		CURRENTLY LIVING DEC 31, 2013	
		number	percent	number	percent	number	percent	number	percent	number	percent	number	percent	number	percent	number	percent	number	percent
	TOTAL CASES	4,814		146		158		161		168		130		131		5,708		3,541	
SEX	MALE	3,543	74	100	68	112	68	116	70	134	72	88	80	101	69	4,194	73	2,502	70
	FEMALE	1,271	26	46	32	46	32	45	30	34	28	42	20	30	31	1,514	27	1,039	30
RACE/ETHNICITY	WHITE	2,438	51	64	41	76	43	67	48	73	42	56	43	70	43	2,844	50	1,703	48
	BLACK	1,252	26	53	27	43	37	52	28	55	32	40	33	38	31	1,533	27	935	26
	HISPANIC	909	19	27	26	33	19	38	21	36	23	25	21	20	20	1,088	19	724	20
	ASIAN/PACIFIC	8	0	1	0	2	1	1	1	2	1	2	1	1	2	17	0	13	0
	NATIVE AMERICAN	4	0	0	0	0	0	0	0	0	0	0	0	0	0	4	0	1	0
	MULTIRACE	203	4	1	5	4	1	3	3	2	2	7	1	2	5	222	4	165	5
AGE (YEARS)	< 13	78	2	1	0	0	1	0	0	3	0	1	2	1	1	84	1	49	1
	13 - 19	128	3	6	2	8	4	13	6	10	8	3	6	8	2	176	3	140	4
	20 - 29	1,086	23	22	15	32	15	32	20	37	20	31	22	28	24	1,268	22	853	24
	30 - 39	1,938	41	35	30	41	24	49	26	39	30	32	23	31	26	2,165	38	1,301	37
	40 - 49	1,096	22	46	35	43	31	38	28	46	23	40	27	37	30	1,346	23	827	23
	Over 49	488	10	36	18	34	25	29	21	33	18	23	19	26	18	669	12	371	10
MODE OF TRANSMISSION	MSM	1,697	35	42	30	65	28	63	41	80	38	55	47	67	40	2,069	36	1,287	36
	IDU	1,381	29	17	11	14	11	13	9	12	8	6	6	15	5	1,458	26	727	21
	MSM/IDU	242	5	4	2	2	3	1	1	1	1	2	1	0	2	252	4	113	3
	COAGULATION DISORDER	55	1	0	0	0	0	0	0	0	0	0	0	0	0	55	1	13	0
	HETEROSEXUAL	966	19	62	45	60	43	52	38	41	34	23	23	23	15	1,227	22	915	26
	TRANSFUSION	34	1	0	0	0	0	0	0	0	0	0	0	0	0	34	1	5	0
	PEDIATRIC	78	2	1	0	0	1	1	0	3	1	1	2	1	1	85	1	50	1
	UNDETERMINED MODE	361	7	20	12	17	14	31	12	31	19	43	21	25	37	528	9	431	12
COUNTY	ADAMS	90	2	3	2	5	2	4	3	8	3	5	5	5	3	120	2	72	2
	BEDFORD	30	1	0	1	3	0	2	2	1	1	5	0	0	3	41	1	24	1
	BLAIR	129	3	2	3	4	1	2	3	3	1	3	2	2	2	145	3	78	2
	CUMBERLAND	505	11	7	9	16	5	14	10	9	9	9	5	17	6	577	10	389	11
	DAUPHIN	1,387	29	40	28	38	28	40	24	57	25	40	34	31	31	1,633	29	981	28
	FRANKLIN	163	3	6	2	10	4	11	6	8	7	3	5	5	2	206	4	131	4
	FULTON	6	0	0	0	0	0	2	0	0	1	0	0	1	0	9	0	8	0
	HUNTINGDON	104	2	1	1	3	1	1	2	0	1	1	0	1	1	111	2	71	2
	JUNIATA	17	0	1	0	2	1	2	1	0	1	1	0	0	1	23	0	17	0
	LANCASTER	1,128	24	36	19	41	25	44	26	40	28	29	23	33	22	1,351	24	834	23
	LEBANON	189	4	7	5	6	5	3	4	7	2	10	4	6	7	228	4	136	4
	MIFFLIN	30	1	1	0	1	1	0	1	1	0	1	1	1	1	35	1	20	1
	PERRY	42	1	0	1	3	0	0	2	1	0	0	1	0	0	46	1	28	1
	YORK	994	20	42	29	26	28	36	16	33	21	23	20	29	21	1,183	21	752	21

\* Includes cases diagnosed prior to 2002

Cumulative are cases diagnosed through December 31, 2013 and reported through March 31, 2014.

Note: Percentages may not add to 100% due to 'rounding'.

**Table 14**  
HIV Disease in Pennsylvania  
Characteristics of Cases by Time Interval of Diagnosis

SOUTHWEST PENNSYLVANIA AIDS PLANNING COALITION  
Allegheny, Armstrong, Beaver, Butler, Cambria, Fayette, Greene,  
Indiana, Somerset, Washington, and Westmoreland Counties

		BEFORE 2008		2008		2009		2010		2011		2012		2013		TOTAL TO DEC 31, 2013*		CURRENTLY LIVING DEC 31, 2013	
		number	percent	number	percent	number	percent	number	percent	number	percent	number	percent	number	percent	number	percent	number	percent
	TOTAL CASES	4,943		195		173		170		166		175		150		5,972		3,484	
SEX	MALE	4,123	84	164	77	142	84	155	83	135	91	143	81	128	84	4,990	84	2,817	81
	FEMALE	820	16	31	23	31	16	15	17	31	9	32	19	22	16	982	16	667	19
RACE/ETHNICITY	WHITE	2,868	58	75	50	79	38	80	47	75	46	89	46	64	51	3,330	56	1,781	52
	BLACK	1,741	35	102	36	69	53	77	40	77	46	72	46	65	41	2,203	37	1,362	39
	HISPANIC	140	3	7	6	7	4	4	3	4	2	4	2	10	2	176	3	132	4
	ASIAN/PACIFIC	21	0	1	2	1	1	0	0	2	0	4	1	2	2	31	0	24	1
	NATIVE AMERICAN	2	0	0	0	0	0	0	0	0	0	0	0	0	0	2	0	1	0
	MULTIRACE	171	3	10	6	17	5	9	10	8	6	6	5	9	3	230	4	184	5
AGE (YEARS)	< 13	32	1	0	1	0	0	2	0	0	1	1	0	1	1	36	1	27	1
	13 - 19	115	2	11	6	9	6	11	5	7	6	11	4	5	6	169	3	138	4
	20 - 29	1,219	25	46	22	42	24	52	24	62	30	51	37	48	29	1,520	25	983	28
	30 - 39	1,909	39	41	24	38	21	37	22	31	22	40	19	47	23	2,143	36	1,198	34
	40 - 49	1,172	23	63	31	51	32	38	30	31	23	44	19	24	25	1,423	24	804	24
	Over 49	496	10	34	16	33	17	30	19	35	18	28	21	25	16	681	11	334	10
MODE OF TRANSMISSION	MSM	2,834	58	106	50	92	55	107	53	102	61	109	62	94	64	3,444	57	1,983	57
	IDU	736	15	22	6	16	11	6	9	6	4	2	4	7	1	795	14	337	10
	MSM/IDU	246	5	3	3	4	2	5	2	0	3	1	0	0	1	259	4	105	3
	COAGULATION DISORDER	64	1	0	1	0	0	0	0	0	0	0	0	0	0	64	1	14	0
	HETEROSEXUAL	702	14	54	27	35	28	30	20	31	18	13	18	13	7	878	15	678	20
	TRANSFUSION	47	1	0	0	0	0	0	0	0	0	0	0	0	0	47	1	8	0
	PEDIATRIC	33	1	0	1	0	0	2	0	0	1	1	0	1	1	37	1	28	1
	UNDETERMINED MODE	281	5	10	13	26	5	20	15	27	13	49	16	35	26	448	7	331	9
COUNTY	ALLEGHENY	3,666	74	152	78	127	78	133	73	130	78	125	78	121	73	4,454	74	2,626	75
	ARMSTRONG	56	1	0	0	2	0	0	1	3	0	2	2	0	1	63	1	33	1
	BEAVER	174	4	3	3	5	2	11	3	7	6	6	4	4	3	210	4	110	3
	BUTLER	99	2	4	2	4	2	4	2	7	2	4	4	3	2	125	2	77	2
	CAMBRIA	181	4	6	5	3	3	4	2	3	2	10	2	4	5	211	4	127	4
	FAYETTE	100	2	7	2	9	4	1	5	4	1	5	2	7	3	133	2	87	2
	GREENE	40	1	1	1	1	1	2	1	0	1	2	0	1	1	47	1	23	1
	INDIANA	57	1	2	1	2	1	0	1	2	0	3	1	1	2	67	1	38	1
	SOMERSET	106	2	5	2	7	3	2	4	2	1	2	1	2	1	126	2	85	2
	WASHINGTON	181	4	5	2	6	3	5	3	3	4	7	2	5	3	212	4	116	3
	WESTMORELAND	283	6	10	6	7	5	8	4	5	5	9	3	2	5	324	6	162	5

\* Includes cases diagnosed prior to 2002

Cummulative are cases diagnosed through December 31, 2013 and reported through March 31, 2014.

Note: Percentages may not add to 100% due to 'rounding'.

**Table 15**  
HIV Disease in Pennsylvania  
Characteristics of Cases by Time Interval of Diagnosis  
NORTHWEST PENNSYLVANIA RURAL AIDS ALLIANCE  
Cameron, Clarion, Clearfield, Crawford, Elk, Erie, Forest, Jefferson,  
Lawrence, McKean, Mercer, Venango, and Warren Counties

		BEFORE 2008		2008		2009		2010		2011		2012		2013		TOTAL TO DEC 31, 2013*		CURRENTLY LIVING DEC 31, 2013	
		number	percent	number	percent	number	percent	number	percent	number	percent	number	percent	number	percent	number	percent	number	percent
	TOTAL CASES	960		28		35		38		29		21		21		1,132		688	
SEX	MALE	767	80	21	85	27	75	32	79	27	84	15	93	13	65	902	80	527	77
	FEMALE	193	20	7	15	8	25	6	21	2	16	6	7	8	35	230	20	161	23
RACE/ETHNICITY	WHITE	607	63	20	67	23	71	23	68	17	63	8	59	9	35	707	63	388	57
	BLACK	234	25	3	21	8	11	8	21	6	21	11	21	7	57	277	24	184	27
	HISPANIC	86	9	5	6	3	18	5	9	3	13	2	10	3	9	107	9	82	12
	ASIAN/PACIFIC	6	1	0	3	0	0	0	0	0	0	0	0	2	0	8	1	5	1
	NATIVE AMERICAN	1	0	0	0	0	0	0	0	0	0	0	0	0	0	1	0	1	0
	MULTIRACE	26	2	0	3	1	0	2	3	3	3	0	10	0	0	32	3	28	4
AGE (YEARS)	< 13	14	2	0	0	0	0	1	0	0	3	0	0	0	0	15	1	12	2
	13 - 19	26	3	1	3	1	4	0	3	2	0	2	7	2	9	34	3	25	4
	20 - 29	250	26	8	27	8	29	10	21	9	26	3	31	4	13	292	26	196	28
	30 - 39	343	36	7	24	8	25	14	24	7	37	8	24	5	43	392	35	223	33
	40 - 49	224	23	7	33	13	25	7	38	7	18	2	24	3	9	263	23	163	24
	Over 49	103	11	5	12	5	18	6	15	4	16	6	14	7	26	136	12	69	9
MODE OF TRANSMISSION	MSM	400	42	10	39	13	36	13	38	21	34	7	72	5	30	469	42	256	37
	IDU	219	23	5	9	2	18	2	6	0	5	3	0	2	17	233	21	127	19
	MSM/IDU	65	7	2	0	1	7	3	3	0	8	0	0	0	0	71	6	44	7
	COAGULATION DISORDER	15	2	0	0	0	0	0	0	0	0	0	0	0	0	15	1	1	0
	HETEROSEXUAL	160	16	10	36	14	36	12	38	6	32	6	21	10	30	218	19	168	24
	TRANSFUSION	10	1	0	0	0	0	0	0	0	0	0	0	0	0	10	1	0	0
	PEDIATRIC	14	2	0	0	0	0	1	0	0	3	0	0	0	0	15	1	12	2
	UNDETERMINED MODE	77	8	1	15	5	4	7	15	2	18	5	7	4	22	101	9	80	11
COUNTY	CAMERON	0	0	0	0	0	0	0	0	0	0	0	0	0	0	0	0	0	0
	CLARION	19	2	0	3	1	0	1	3	2	3	2	7	0	9	25	2	20	3
	CLEARFIELD	83	9	4	6	3	14	5	9	1	13	1	3	0	4	97	9	67	10
	CRAWFORD	83	9	5	6	5	18	1	15	5	3	5	17	1	26	105	9	64	10
	ELK	9	1	1	0	0	4	1	0	0	3	0	0	0	0	11	1	7	1
	ERIE	429	45	8	39	19	29	20	53	10	53	9	34	14	43	509	45	315	45
	FOREST	10	1	1	0	0	4	1	0	1	3	0	3	0	0	13	1	11	2
	JEFFERSON	24	2	1	3	0	4	1	0	0	3	0	0	0	0	26	2	15	2
	LAWRENCE	77	7	3	27	1	11	3	3	4	8	0	14	2	0	90	8	45	7
	MCKEAN	42	5	0	0	1	0	2	3	1	5	2	3	2	9	50	4	30	4
	MERCER	109	12	2	9	4	7	1	12	4	3	2	14	1	9	123	11	69	10
	VENANGO	43	5	1	3	0	4	1	0	1	3	0	3	1	0	47	4	20	3
	WARREN	32	3	2	3	1	7	1	3	0	3	0	0	0	0	36	3	25	4

\* Includes cases diagnosed prior to 2002

Cumulative are cases diagnosed through December 31, 2013 and reported through March 31, 2014.

Note: Percentages may not add to 100% due to 'rounding' .